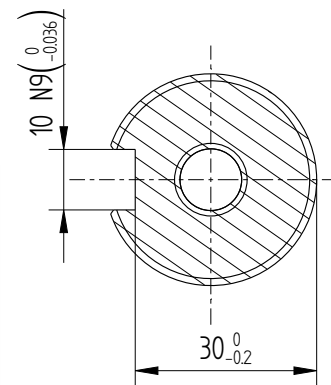
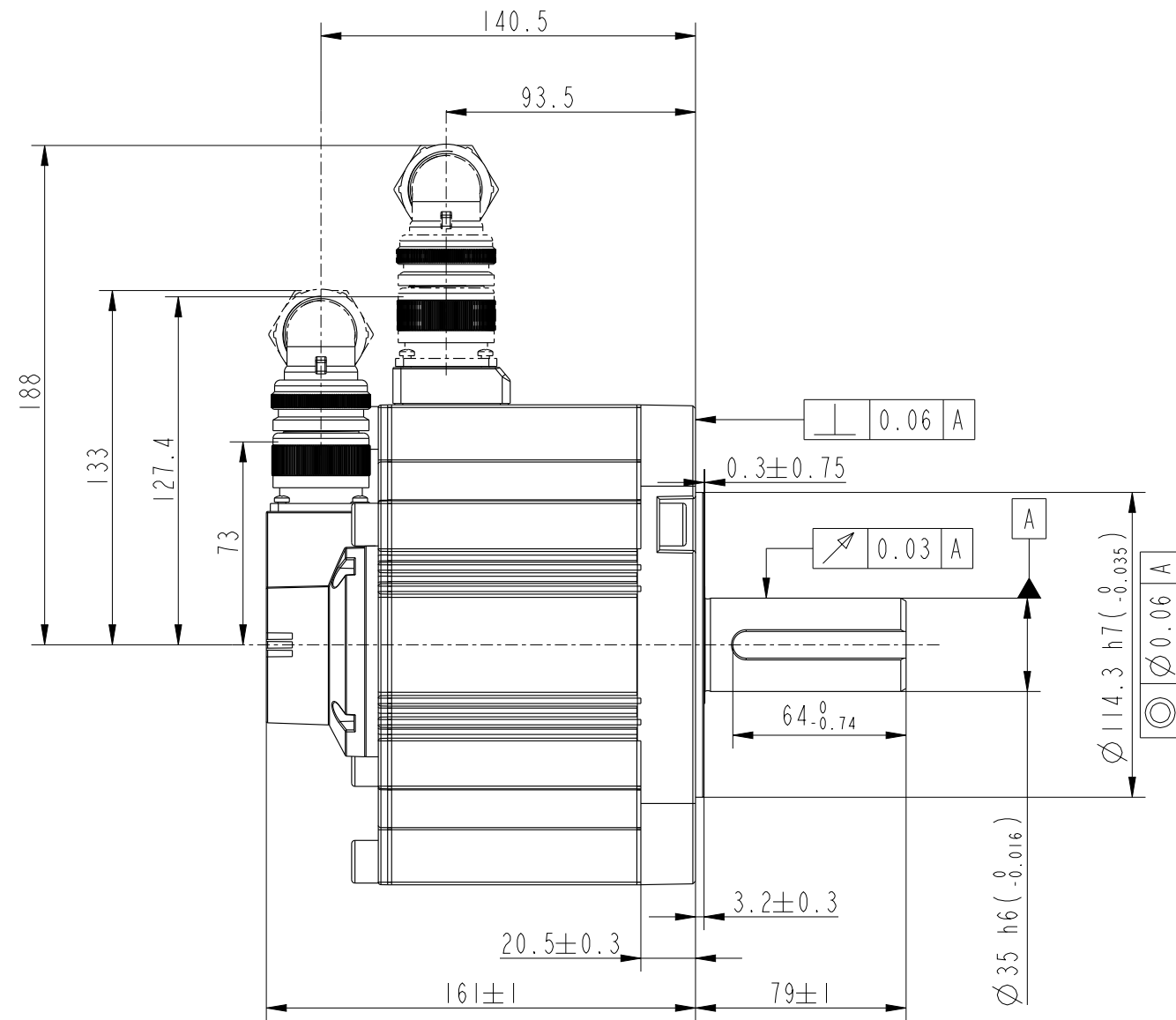
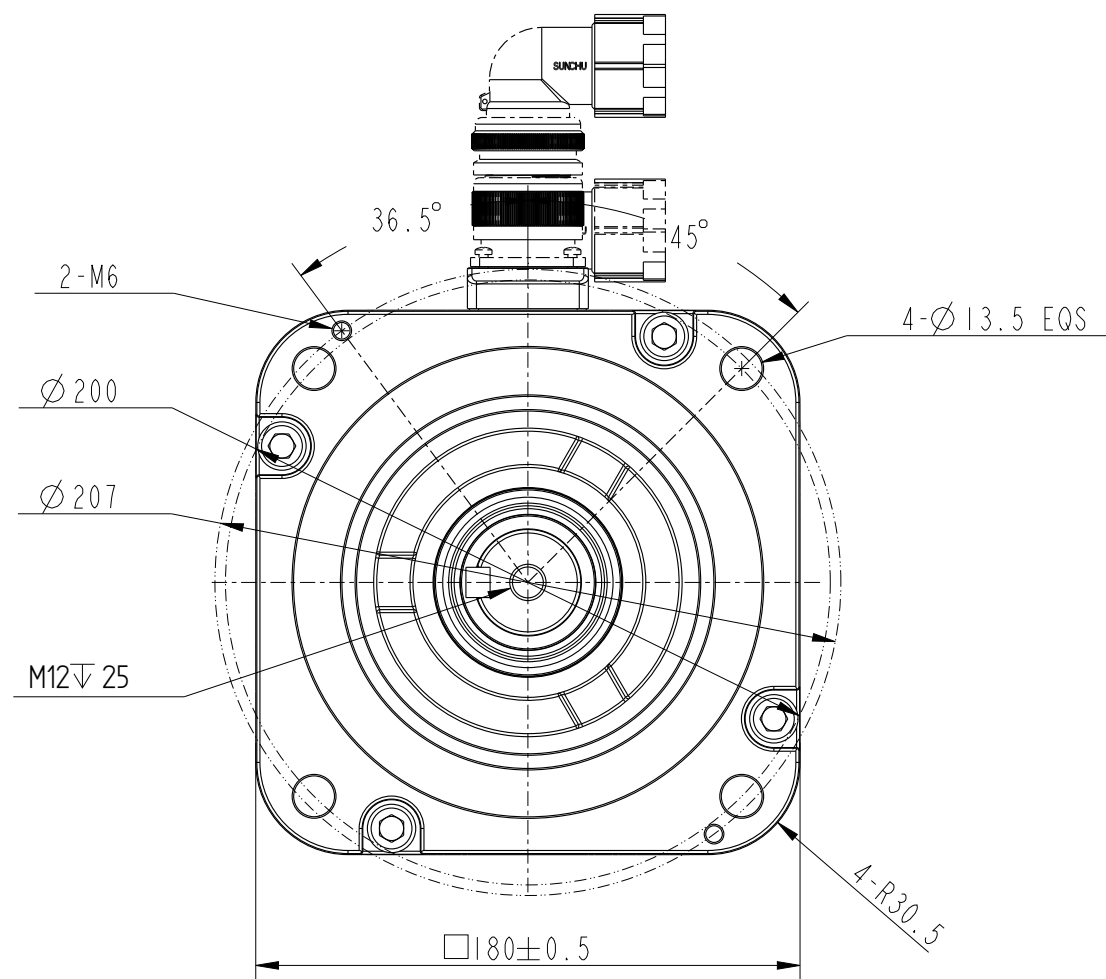
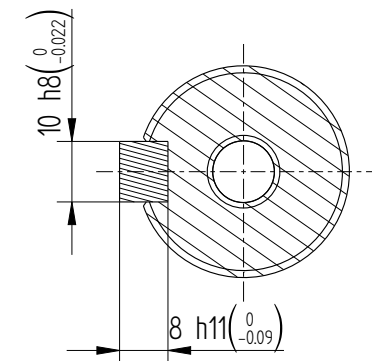


Amendment	Description
-----------	-------------

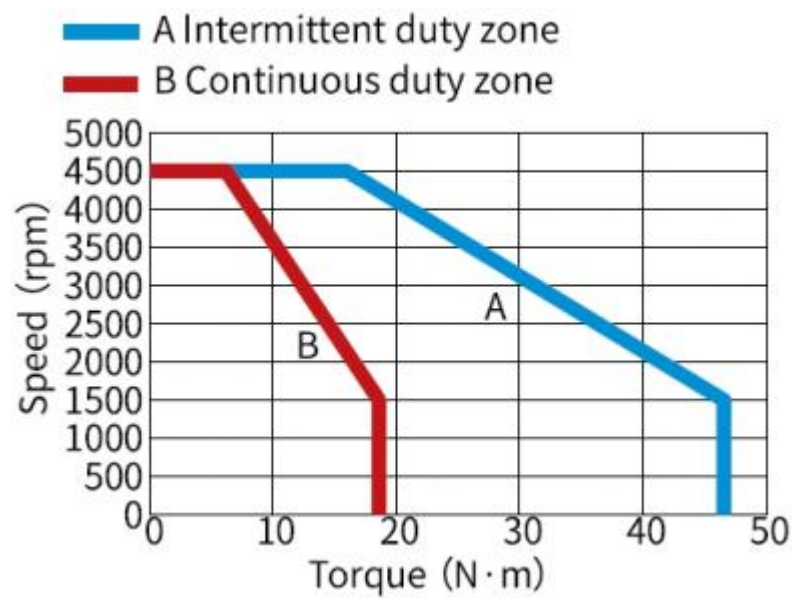
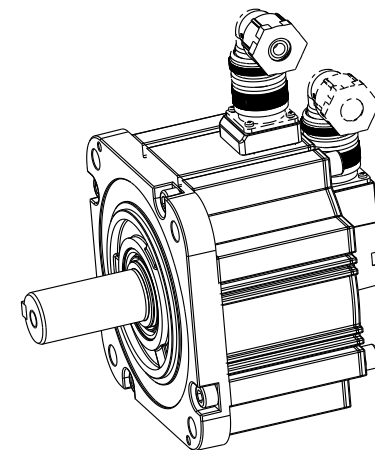
Unit: Millimeter (mm)



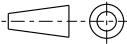
Dimension of shaft end



Dimension of shaft end with key



Basic function parameters	
Rated power kW	2.9
Rated voltage V	220
Rated current A	18
Peak current at rated speed A	52.5
Rated torque Nm	18.6
Peak torque at rated speed Nm	46.5
Rated speed rpm	1500
Max speed rpm	4500
Rotor inertia kg·cm ²	44.7 \pm 10%
Encoder resolution	23bit
insulation class	F(155)
Protection level	IP67
Static torque of brake Nm	/
Brake power supply V	/
Brake backlash°	/
duty cycle	S1
Radial load N	≤1470
Axial load N	≤490

				Motor Outline Drawing			01118001-WX	
B01	Replace	/	/					
Version	Change method	Change by	Date	/			Mark	INOVANCE
Design	/							
Check	/							
Craft	/							
Verify	/			Weight	Scale	Version	page 1 of 1	
standardization	/			13.8kg	25	B01	Model	MS1H3-29C15CB-A331R-INT
Approve	/							